



ST HELENS
BOROUGH COUNCIL

ECF



St Helens Masterplan Phase 1 Development

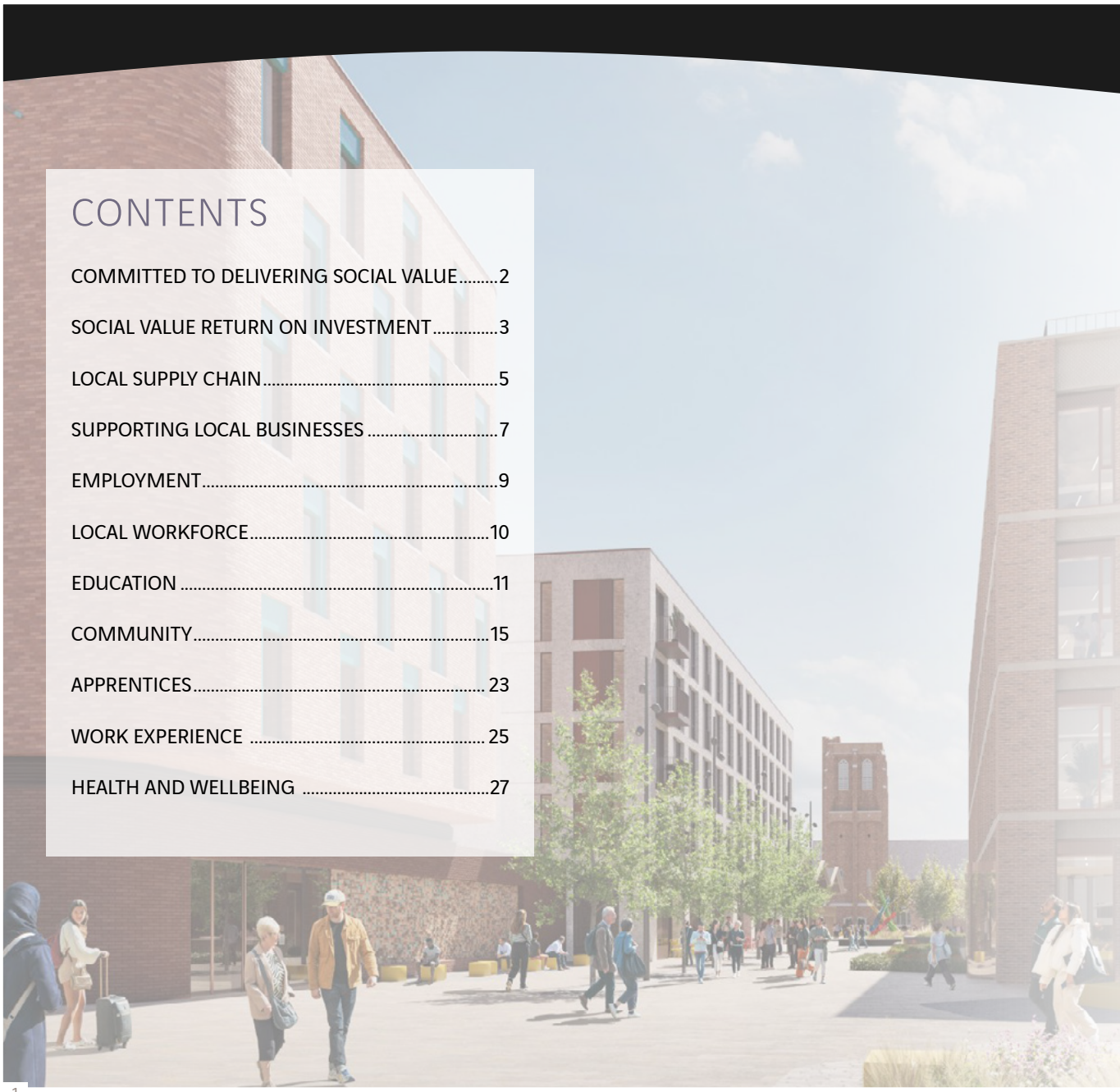
Social Value Delivered

October 2025 - March 2026



CONTENTS

COMMITTED TO DELIVERING SOCIAL VALUE.....	2
SOCIAL VALUE RETURN ON INVESTMENT.....	3
LOCAL SUPPLY CHAIN.....	5
SUPPORTING LOCAL BUSINESSES	7
EMPLOYMENT.....	9
LOCAL WORKFORCE.....	10
EDUCATION	11
COMMUNITY.....	15
APPRENTICES.....	23
WORK EXPERIENCE	25
HEALTH AND WELLBEING	27



COMMITTED TO DELIVERING SOCIAL VALUE

VINCI Building is committed to embedding social value into every stage of our construction projects. From pre-construction through to completion, we work in partnership with local communities to create lasting impact.

Our approach is proactive and collaborative, engaging local organisations early to identify opportunities and deliver meaningful outcomes. Social value is led by our dedicated team, who connect with community groups and invite stakeholders to take part in activities that support our social value offer.

This brochure highlights real stories of how our work has positively influenced people, places, and future generations.



A handwritten signature in black ink, appearing to read 'Gary Hughes'.

Gary Hughes
REGIONAL DIRECTOR



A handwritten signature in black ink, appearing to read 'Stuart Brown'.

Stuart Brown
CONSTRUCTION DIRECTOR

SOCIAL VALUE RETURN ON INVESTMENT



Social Value Portal

Together, we are tracking our social value delivery through Social Value Portal - a platform that procures, measures and reports Social Value as a Social Return on Investment, using 'proxy' values, so that we can quantify how much value we are adding to communities.

The Social Value TOM System™ of Themes, Outcomes and Measures (TOMs) is a trusted method for recording and reporting Social Value. Engineered by Social Scientists and backed by data sources, it's a robust way to accurately and credibly evidence our activity. 4 key themes underpin each TOM.



Community



Work



Economy

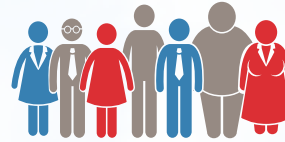


Planet

Each area of Social Value has a Social Return on Investment (SROI), documented in this brochure and in our monthly client report. This will increase as the project progresses.



Apprentices
£47,085



**Community
Donations**
£76,823



**Volunteering
Time**
in the
Community
£4,823



Education
£11,038



**Supporting
People**
into **Work**
£21,855



Spend
with **Local**
Supply Chain
£23,400,288

**Expert
Advice**



to **VCSEs**
& **MSMEs**
£15,352



**Work
Placements**
£23,800



Wellbeing
£2,214

LOCAL SUPPLY CHAIN

LOCAL CONTRACTORS APPOINTED

As a Tier 1 contractor, we're proud to support local businesses because it strengthens the regional economy, promotes community relationships, and delivers genuine social value. By working with local suppliers, we help create jobs, reduce environmental impact, and promote inclusive growth, leaving a lasting positive legacy in the areas where we operate.

As agreed in partnership with St Helens Borough Council we are documenting the procurement of local subcontractors within a 20-mile radius.

The WS1–2 Minor Works packages were delivered by a group of specialist subcontractors, including **Ayesa** for site investigation, **LPL Building Services** for temporary site services, **HA Civils** for pre-hoarding enabling works, and **Nationwide Fencing Limited** for the main hoarding installation. **Nationwide Management Services Limited** are providing ongoing site security.

The WS1–2 Major Enabling Works are supported by the same coordinated supply chain. **LPL Building Services** are delivering temporary site services, **Nationwide Fencing Limited** the hoarding works, and **Nationwide Management Services Limited** the site security. **Webber Engineering Limited** are removing the Millennium Needle, **A&B Engineering** are delivering MEP services, and **Summit Marine Scaffolding Limited** are providing scaffolding.

The WS3–4 Enabling Works involve a wider group of subcontractors preparing the site for construction. **Ayesa** are carrying out site investigation works, supported by **LPL Building Services** for temporary site services. **Nationwide Fencing Limited** are completing hoarding installations, with **Nationwide Management Services Limited** maintaining site security. **A&B Engineering** are delivering MEP services, **Murraywood Construction Limited** the groundworks, and **Town & Country Vibro Limited** the ground remediation. **Premier Traffic Management Limited** are providing traffic management, **HA Civils** the traffic signal civils works, and **Soil Engineering** the grouting works.

83.6% work packages procured
are within the local area



The WS3–4 Main Works are being delivered by a coordinated construction team. **Murraywood Construction Limited** are progressing the groundworks, with **Webber (NW) Limited** responsible for the steelwork package. **Summit Marine Scaffolding Limited** are providing scaffolding, and **A&B Engineering** delivering MEP services. **LPL Building Services** are providing temporary electrical installations, while **Nationwide Management Services Limited** continue to oversee site security. The design team comprises **Austin Smith Lord** (Architect), **Planit IE Limited** (Landscape Architect), **AJP Limited** (Structural Engineer), alongside further works packages including **SFS**, ceilings and partitions by **SAL**, roofing by **MAC Roofing**, and brickwork by **Stock. Soil Engineering Limited** are also delivering drilling and grouting works, supported by **Planit** for novated Stage 5 design services and **AJP** for wider structural design.

The WS7a Temporary Bus Station works are being delivered by a focused group of subcontractors, with **HA Civils** undertaking the groundworks, **A&B Engineering** providing MEP services, and **Nationwide Management Services Limited** managing site security. **Webber (NW) Limited** are completing the miscellaneous metalwork packages needed to support the installation of key structural elements.



this contract

31,597,221

has been invested
in the local supply chain,
with delivery partners located

within a **20-mile** radius of the site



PROGRAMME OF SUPPORT FOR LOCAL BUSINESSES

We have developed a short programme of online sessions for businesses that expressed interest in the St Helens Regeneration Scheme through the Council's Supplier Portal. Created with St Helens Business Launchpad, the programme responds to topics local suppliers identified as important, including supply chain management, social value, recruitment, apprenticeships, business development, environmental sustainability and health and safety.

Programme Purpose and Benefits

The sessions are designed to help local SMEs build practical skills, improve readiness for future opportunities and strengthen their ability to participate in the regeneration programme. Each workshop is free and accessible online, offering clear guidance, real examples, and opportunities to ask questions. Follow-on support is available through Business Launchpad for businesses that need further advice.

Session Topics

- Social Value & Sustainability Strategies for SMEs
- Early Careers & Recruitment Strategies
- Bid Writing Skills
- Supply Chain Management & Growth



Programme Outcomes

The programme equipped local businesses with practical skills and readiness to meet compliance and capability requirements for upcoming opportunities. It has strengthened the local supply chain by increasing participation from St Helens-based firms and supporting the integration of social value into everyday business practices. It has also encouraged valuable networking and collaboration between local businesses and VINCI Building, encouraging shared learning and growth.

Your presentation was extremely insightful, and I will be discussing key points identified with my colleagues to further enhance and develop our strategies.

Dan McGregor, Business Development Director,
AJS Scaffolding

STAR PROCUREMENT EVENT – THE ST HELENS BUSINESS LAUNCHPAD

The St Helens Business Launchpad and St Helens Council Procurement Event, held on 12th February 2026, brought together 45 local businesses for a morning of insight, practical guidance and networking. The session opened with Councillor Groucutt, followed by STAR's Michael Crooks, who provided clear advice on bid writing and navigating The Chest procurement portal. Joe Keegan then outlined the wider support available to businesses across the Liverpool City Region. Our Social Value Manager, Hannah Bailey, delivered a focused presentation on the benefits of social value for local suppliers and the key lessons they can draw from our approach. The event concluded with a Q&A panel featuring representatives from STAR, LCR, Bid Management Services and the regeneration team, alongside our own team members, before closing with a well-received networking session where attendees raised constructive and thoughtful questions.



COMMITTED TO RECRUITING LOCALLY

As part of our commitment to recruiting locally, we are working closely with St Helens Ways to Work, supported by Fawkes & Reece. Our project Recruitment Consultant, Ollie McMahon, is regularly based at the Ways to Work office, engaging with local residents, registering candidates and supporting them into employment. This approach has already helped several people secure roles on our scheme and others on nearby projects.

To date, Fawkes & Reece have registered **49** candidates through the programme, creating a strong pipeline of local talent for upcoming vacancies. Ollie has also arranged CSCS training and continues to meet jobseekers weekly. Alongside this, we have delivered **207** hours of 'support into work' activity, including mentoring, mock interviews, CV advice and careers guidance.

On 29th January, our team and Fawkes & Reece attended the St Helens Ways to Work networking event at the Brewdog Stadium, which included employer presentations and a public recruitment session promoting local opportunities.



Murraywood Construction

Jayda King - Administrator

**Where do you live?**

Warrington

Where was your place of work prior to starting this role?

Warrington & Vale Royal College.

What does this job mean to you?

Being an Administrator at Murraywood Construction means a lot to me. After taking time out of work as a single mum, finding a flexible, part time role was incredibly important. This job has helped me rebuild my confidence, develop new skills and feel part of a supportive team again, while still being there for my son. I've rediscovered how much I enjoy a structured environment where my organisational skills genuinely contribute to the smooth running of the project. It gives me the balance I need the chance to grow in my career while prioritising my family and I feel proud of what I achieve every day.

How have you found working on site?

Transitioning from an office role to working on site has been rewarding and eye opening. Seeing how on site activity connects to the admin tasks I handle has given me a much clearer understanding of the project as a whole. Being on site has strengthened my relationships with the team and improved communication day to day. Overall, it has broadened my perspective and made me a more confident, well rounded administrator.

VINCI Building

Christopher Roden - Site Operative

**Where do you live?**

St Helens

Where was your place of work prior to starting this role?

Working for agencies, doing odd jobs where I can.

What does this job mean to you?

This role is brilliant for me as it's 10 minutes from my home which means I can spend more time with my family outside of work. Also having 2 years' worth of work on my doorstep is a great piece of mind.

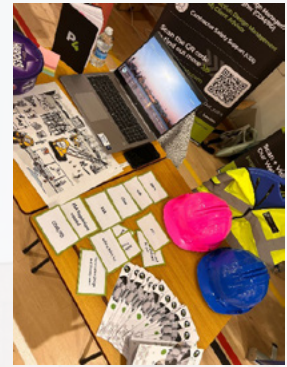
How have you found working on site?

Brilliant, everyone is really nice. I have enjoyed seeing the start of a construction site and learning new skills. I am also really grateful that the team are supportive of my Veteran counseling. Being ex-armed forces it's great to have the support of the team.

REGENERATION TEAM SUPPORT DE LA SALLE CAREERS FAIR

On 6th November, colleagues from the St Helens Regeneration Team came together to support De La Salle's Careers Fair, showcasing the breadth of opportunities within the local construction and regeneration sector.

A huge thank you to HA Civils, Project 4 Safety, A&B Engineering, Ubique, St Helens Borough Council, and Fawkes & Reece for joining forces to inspire the next generation. Their presence made a real impact by offering students valuable insights into career pathways, sharing expertise, and demonstrating the collaborative effort driving regeneration in St Helens.



RAINHILL HIGH SCHOOL CAREERS FAIR

On 27th January, our team and supply chain partners A&B Engineering and Huyton Civils met with St Helens College to explore local opportunities for students. We are supporting the college in securing CSCS cards for learners, enabling them to take part in work experience placements across our project and wider supply chain.

Throughout the programme, we will jointly deliver a range of activities for students, including engineering talks, digital engineering sessions, careers presentations, practical “have a go” workshops, apprenticeship guidance, CV support and mock interview days.



SUPPORTING THE GROWTH COMPANY EDUCATION & SKILLS

Earlier this month, Project Manager Stuart Turner and Senior Construction Manager Andrew Rainger met with Neil Rigby at the GC Education and Skills St Helens Training Centre to develop a new Construction Pathways & Community Engagement Programme.

The programme is designed to create clear, supportive routes into construction for young people, particularly those facing personal, educational or social challenges. It focuses on learners who may have low self-esteem, additional needs or difficult circumstances, ensuring they can access meaningful training, work experience and

long-term employment opportunities.

Learners will take part in work experience, drone demonstrations, skills development activities, CV and careers support, interview preparation, and industry awareness sessions. Work placements will be structured with supply chain partners for 1–2 days per week, alongside talks and demonstrations delivered by contractors.

On 27th March, we will deliver the first session, introducing learners to our team, the scope of the programme and the work experience opportunities available on site.

SUPPLY CHAIN ENGAGEMENT EVENT – CLOSING THE SKILLS GAP

On 20th February, we were proud to host our annual Northwest supply chain engagement event, this year centred on one of our industry's biggest priorities: closing the skills gap and creating meaningful pathways into employment for young people across the region.

Bringing together our supply chain partners and local colleges, the event provided a collaborative space to connect, share insight and explore how we can collectively strengthen the future workforce. St Helens College, joined by other local education partners, highlighted the scale of the skills shortage through an engaging panel discussion and the urgent need for industry led action.

Together, we explored a range of opportunities that can make a real difference for young people including work placements, guest talks, industry led days, SWAPs, T Levels and apprenticeships. During a hands on workshop, businesses discussed successes, challenges and practical ideas for each area of support, helping us identify what's working, what isn't and where new opportunities lie.

Our supply chain then made individual pledges to local colleges, outlining how they will support learners into meaningful careers a fantastic step forward in building a stronger, more inclusive pipeline of future talent.

We also celebrated the achievements of our partners over the past year, recognising our Social Value Award winners, including local partner Huyton Civils, for their outstanding commitment to creating positive impact in our communities.

Together, we're building more than projects we're building futures. Thank you to every supply chain partner who helps make this possible.



SUPPORTING THE HOPE CENTRE

The Hope Centre is a community focused charity in St Helens that supports people facing hardship, including those experiencing unemployment, social deprivation and homelessness. Through services such as the Foodbank, Baby Basics, the Breathe mental health course, the Hope Pantry and Hope House, the charity provides essentials, advocacy and emotional support to help people rebuild stability and confidence. Its dedicated volunteers meet individuals at their most vulnerable, offering compassion, practical help and a safe place to turn.

Throughout the project, our team and supply chain partners have committed to supporting The Hope Centre in meaningful and coordinated ways. In Winter 2025, this collective effort grew into a series of targeted initiatives designed to meet the charity's most pressing seasonal needs.

Severe Weather Emergency Protocol (SWEP) Support

During severe winter nights, the Hope Centre opens its doors overnight to provide emergency shelter for people who would otherwise have nowhere to go. Last year, many had to sleep on the floor.

To strengthen this life saving provision, Murraywood Construction donated 20 camp beds worth £919, ensuring vulnerable individuals can rest safely and comfortably during freezing conditions. The donation was gratefully received by Mark, the Homeless Prevention Officer, and Megan as they prepared for the winter season.

Baby Basics Support

Recognising the financial pressures faced by new parents, our partners rallied around the Hope Centre's Baby Basics project, which provides essentials to families in crisis.

Murraywood Construction donated £479 of baby supplies, filling three trolleys at Tesco.

Summit Scaffolding donated toiletries, helping ease the burden on families struggling to afford basic items.

These contributions ensure parents receive the practical support they need at one of the most challenging moments in their lives.

Winter Essentials Donations

To help individuals and families facing hardship through the festive period, our partners also contributed vital winter items and food:

Bradley Demolition donated £460 worth of food and Christmas gifts, helping bring warmth and comfort to local families over winter.

Webber donated £350 worth of essential winter items to Hope House, ensuring people experiencing or at risk of homelessness have access to warm clothing and personal care items during the coldest months.

Together, these contributions reflect a shared commitment across our project and supply chain to stand alongside The Hope Centre and the people it supports. By working collectively, we are helping ensure that individuals and families in St Helens receive compassion, dignity and practical support when they need it most.



COMMUNITY

SUPPORTING LOCAL TRUSSELL TRUST FOODBANK



During the winter season of 2025, supply chain partners Summit Scaffolding and Webber generously

donated essential food items to the Trussell Trust, a local foodbank network dedicated to supporting individuals and families facing food insecurity. Their contribution will help provide essential groceries and supplies to those in need, ensuring that vulnerable members of the community receive vital assistance during challenging times.



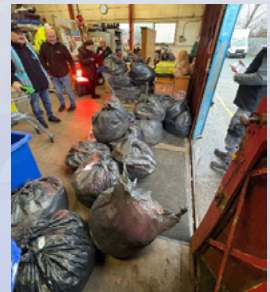
DONATING TO RAISE FUNDS FOR WILLOWBROOK HOSPICE

Willowbrook Hospice relies heavily on its network of charity shops including a large furniture Donation Warehouse and an online eBay store to raise vital funds for patients with terminal and life limiting illnesses. By selling donated clothing, homewares, books and furniture, these shops help fund specialist patient care and bereavement support for families across the local community.

In November, Murraywood Construction donated £230 worth of clothing and electronics, which will be sold through the hospice's shops and online platforms to generate essential income for patient care and family support services. Contributions like this not only provide financial help but also raise awareness of Willowbrook's mission within the community.

Continuing this commitment, Murraywood also donated £5,000 worth of preloved clothing, contributed by colleagues and including a mix of designer and high street brands. These items are expected to raise approximately £1,000 through second hand sales, providing valuable funds while promoting sustainability by giving quality items a new lease of life.

Together, these donations strengthen Willowbrook's ability to deliver compassionate, specialist care to those who need it most.



CHRISTMAS 2025

A&B Engineering Helps Bring Joy to Local Families

A&B Engineering donated £250 to St Helens Council's Christmas Toy Appeal, helping to bring joy to children and young people across the community this festive season. This generous contribution will go towards providing gifts from the appeal's wish list, ensuring that families facing hardship can still experience the magic of Christmas. By supporting this initiative, A&B Engineering is helping to create lasting memories and spread happiness where it's needed most.

Christmas
GIFT APPEAL

Our Children and Young People's Wish List

Advent calendar	Gaming voucher	Phone cases
After shave	Gift cards	Phone charms
Alarm clock	Handbags	Playdough
Amazon voucher	Hat	Power bank
Arts and Crafts	Heated blanket	Press on nails
Baseball cap	Heated curler set	Running/football shoes
Bike Repair/cleaning kit	Heated Gloves	Scrabble
Biscuits	Hot water bottle	Sensory toys
Board Games	Just eat voucher	Skipping rope
Boots voucher	Lego	Snoodie
Boxing gloves	Make up	Socks
Chocolate	Man Bag	Stocking
Colouring books	Minecraft	Teddy bear
Design a mug kit	Mini golf	Toiletry set
Dobble	Money	Tracksuit - dark colours
Dry shampoo	Naughty elf	Uno card game
Dumbbells	Nike T-shirt	Vouchers for games
Educational books	Outdoor Games	Water colour pens and
Electric razor	Pencils	Sketch book
False eye lash	Pens	Wireless headphones
Football	Perfumes	

To find out more information, visit
sthelens.gov.uk/christmasgiftappeal

COMMUNITY

Spreading Christmas Cheer with the Standing Tall Foundation

On Friday 12th December, three colleagues from St Helens Borough Council joined forces with A&B Engineering for a wonderfully festive volunteering morning with the Standing Tall Foundation. The team took part in the charity's annual Christmas Wrapping Event, helping to wrap, pack, and deliver over 3,000 presents to 1,020 children and their families.

These gifts were distributed across 40 local schools identified as having pupils with the greatest need, as well as to homeless families, refuges, those in temporary accommodation, and Young Carers. This incredible effort ensured that some of the most vulnerable children in the community had something special to open on Christmas Day. The event was a celebration of community spirit, with volunteers donning cheerful festive outfits and working together to make a meaningful difference.



Helping St Helens Young Carers Centre

Young Carers are children and young people aged 6–18 who provide regular care or emotional support to a family member who is ill, disabled, experiencing a mental health condition, or affected by substance misuse. Many take on responsibilities far beyond their age, yet they deserve the same opportunities and moments of joy as any other young person.

This Christmas, Murraywood Construction donated £100 worth of toys to St Helens Young Carers, helping to brighten the festive season for children who spend much of their time caring for others. This thoughtful contribution supports the charity’s mission to recognise, value and uplift young carers within the community.

VINCI Building Sponsor the St Helens Town Centre Christmas Lights 2025

St Helens town centre is lit up thanks to two traditional Christmas trees supplied by St Helens based Rainford's farm and Christmas trees and funded with support from VINCI Building. The trees are situated in Church Square and Victoria Square and will be lit up daily throughout the Christmas period.

Councillor Richard McCauley, Cabinet Member for Regeneration at St Helens Borough Council, said:

We are grateful to VINCI Building for their continued support and commitment to giving back to St Helens Borough throughout the town centre regeneration programme. Major progress has been made on the works this year and it is vital we remind residents and visitors that the town centre remains open throughout the construction period and that we are ready to welcome them. These Christmas trees are a fantastic way to show that and allow our residents to enjoy the festive period.



Richard Rainford owner of Rainford’s farm and Christmas trees said:

As a local business we are once again proud to supply the Christmas trees for St Helens town centre. We have been supplying the trees for around thirty years and every year it is a pleasure to see them take centre stage in the place we call home, celebrating community spirit and delivering a festive boost to local businesses and residents.

COMMUNITY

VINCI BUILDING SUPPORTS THE MAYOR'S CHARITY FUND

As part of our commitment to the St Helens community, we have contributed £1,000 on behalf of the St Helens Regeneration Project to the Mayor's Charity Fund. This support will benefit the Mayor's two nominated local charities: Willowbrook Hospice and Racing Welfare, both of which provide vital services to residents across the borough.

We're pleased to play a small part in strengthening the local support network and giving back to the community we are proud to be working within.

VINCI BUILDING DONATE TO THE BOBBY COLLERAN TRUST

On 13th March, our St Helens site team contributed £1,180 to the Wear Blue for Bobby campaign in support of the Bobby Colleran Trust. The charity was founded in memory of six year old Bobby Colleran, who tragically lost his life in a road accident in 2014, and now works to improve children's road safety across local communities.

To honour Bobby and raise awareness of the Trust's work, the team wore the campaign's blue T shirts and took part in site wide fundraising. This year's event held added significance, as Bobby would have celebrated his 18th birthday.

Our Widnes Head Office also joined in, wearing blue and adding their Friday dress down contributions to the total. One colleague even handcrafted an Easter Gonk filled with chocolate eggs, which became the centre of a "Name the Gonk" competition, helping to raise additional funds for the cause.





APPRENTICES

VINCI Building are committed to fostering the next generation of skilled professionals through comprehensive apprenticeship programs. Each year, we recruit apprentices across various roles, including construction, digital engineering, and civil engineering, providing them with hands-on experience through project rotations. Our apprentices benefit from a structured training program, mentorship, and opportunities for personal and professional growth.

Through our social value offer we promote apprenticeship opportunities to local schools and colleges and work with our supply chain partners to ensure they follow our passion in supporting the next generation.



Murraywood Construction

Freddie Ball - Quantity Surveyor

Aged 19 – 1st year student – HNC QS

What has your career journey been?

After completing A Levels at Priestley College, I gained early on site experience as a groundworker. That exposure helped me realise that a Quantity Surveying apprenticeship was the right path for me.

What has been a key highlight of your career?

Hands on experience and learning directly from experienced professionals, gaining real insight into live projects.

Describe your experience working for Murraywood Construction.

I work four days a week alongside a Senior QS, solving real time issues on active projects. I learn something new every day, and each experience contributes to my development.

What does it mean to you to work on a project in your local area?

It's great to gain on site experience close to home while studying at university.

VINCI Building

Matthew Sumner - Assistant Quantity Surveyor



What has your career journey been?

I joined the VINCI Building straight after A Levels and completed a Degree Apprenticeship in Quantity Surveying.

What has been a key highlight of your career?

Completing my first project, the Aspen Wood Low Secure Unit, was a major milestone.

What does your apprenticeship mean to you?

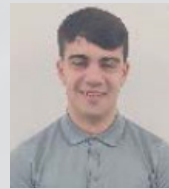
The apprenticeship route has allowed me to gain practical on the job experience while studying, strengthening my skills and supporting my career progression.

Advice for students who are considering an apprenticeship:

Apprenticeships are a great way into the industry ask questions, stay curious, and take every opportunity to grow your experience.

VINCI Building

Lucas Bavin - Assistant Quantity Surveyor



What has your career journey been?

I am currently studying Construction Quantity and Survey degree at Liverpool John Moore University. In 5 years, I would like to be a fully qualified Quantity Surveyor, progressing on to a more senior role.

What does your apprenticeship mean to you?

This apprenticeship means a lot. It gives me experience on a live site, strengthens the link between my work and university studies, and allows me to earn a wage without taking on student debt.

Advice for students who are considering an apprenticeship:

Apprenticeships offer fantastic opportunities, but they require commitment and dedication.

VINCI Building

Ethan Starke



Secondary school student Ethan Stark previously completed work experience on another local VINCI Building project and was keen to learn more about the different careers available in construction.

The St Helens team were

delighted to welcome him for further experience on the regeneration project.

What are you currently studying and where at?

Design, Technology, Media Studies and History, St Bede's Catholic High School.

Do you have a long-term career goal?

Yes, to be an Engineer or Architect.

What does your work experience mean to you?

It is an insight into the Engineering Industry on a construction site.

What has your experience been like working on St Helens Regeneration?

My experience was good because I have been able to see first-hand a subject I am very interested in.



VINCI Building

James Green

Where do you live?

I live in Eccleston St Helens.

What are you currently studying, and do you have a long-term career goal?

I began studying a Law LLB degree at university, but after gaining a better understanding of the legal profession, I realised it wasn't the right path for me. I explored different options and was particularly drawn to Quantity Surveying. My long-term goal is now to qualify as a Quantity Surveyor.

What does your work experience mean to you?

Work experience is really valuable because it's helped me understand both the working environment on a project and the expectations within the office. It's also given me the chance to get familiar with key systems, such as Bluebeam.

What has your experience been like working on VINCI's St Helens Regeneration project?

It's been a great experience. I've enjoyed meeting the commercial team and getting a feel for the role before applying for the apprenticeship programme.

Bradley Demolition

Matthew Scott



Matthew Scott undertook paid work experience with Bradley. Matthew completed 12 weeks of paid work experience with Bradley Demolition, gaining hands-on insight into risk assessments, safety procedures, the use of protective equipment and how demolition contributes to the wider construction process. He also observed machinery in action, learned how materials are sorted for recycling and saw

the importance of teamwork and communication on a busy, safety-focused project.

What did you hope to gain from your work experience?

To understand what goes into working on a construction project and to experience being part of a team.

What has your experience been like on the St Helens project?

It's been really rewarding. Everyone has been willing to take me on board, share their knowledge and teach me new skills. I'm grateful to everyone who made it possible.

Matthew made a lasting impression from day one. Joining us at just 16, he showed commitment, reliability and a real willingness to learn. While we're sad to see him go, we're incredibly proud that he's moving on to join the Army, a testament to his discipline and determination. We know he'll go on to achieve great things.

Andrew Booth,
Demolition Project Manager,
Bradley Demolition

HEALTH AND WELLBEING

Social Return On Investment **£2,214**

All VINCI Building employees currently working on the project have access to a 12-month wellbeing programme. Monthly activities relating to the subject are delivered and yearly health checks are carried out. Employees also have access to a confidential 24 hr hotline to support their mental health.



Health & Wellbeing 2026

 **HEALTH, SAFETY & WELLBEING**
WORK SAFE - LIVE WELL

<p>January</p> <p>Dry January Veganary Month Brew Monday</p>	<p>February</p> <p>Time to Talk Day Healthy Heart - Restart an Heart Random Act of Kindness Day</p>	<p>March</p> <p>Nutrition & Hydration Week World Sleep Day International Women's Day</p>	<p>April</p> <p>Stress Awareness Month World Health Day - Your Health at Work Earth Day / Workplace in Bloom</p>
<p>May</p> <p>Steps to Health Skin Cancer Awareness Mental Health Awareness Week</p>	<p>June</p> <p>World Wellbeing Week Loneliness Awareness Week Diabetes Awareness Week</p>	<p>July</p> <p>Blood & Organ Donation Awareness Samaritans Day 24/7 Speak up Reach out</p>	<p>August</p> <p>National Wellness Month Eat Right, Move Right Your Wellbeing and Nature</p>
<p>September</p> <p>Fitness Heroes World Suicide Prevention Day Know your Numbers Mindfulness Day</p>	<p>October</p> <p>Wellbeing Photo Competition National Cholesterol Month World Mental Health Day Sober October/Liver Cancer Awareness Month</p>	<p>November</p> <p>International Stress Awareness Day - Movement Mens Health Day Road Safety Week</p>	<p>December</p> <p>Winter Wellbeing - Beat the Blues Winter Virus Awareness</p>

VINCI Building are a company supporter of the **Lighthouse Charity**. The Lighthouse Construction Industry Charity is the only charity that provides emotional, physical and financial wellbeing support to the construction community and their families. Their mission is to ensure that the construction community can easily access the emotional, physical and financial wellbeing support they need and to develop healthy and sustainable futures for this generation and the next.

Project workforce can access a free helpline and wellbeing resources that include:

- Self paced eLearning
- Wellbeing & Mental Health Training
- Wellbeing Champions support
- Self-Support App
- 'Make it Visible' site tours and talks



24/7 Helpline 

UK 0345 605 1956

ROI 1800 939 122

Text **HARDHAT** to

UK 85258 or ROI 50808

I would like to express my gratitude, which I know is also reflected by others at the Council, on the positive and impactful social value activity being led by VINCI Building and supported by our wider design and construction teams. As you know maximising social value to create quality employment for local residents, inspiring young people, supporting local third sector organisations and providing supply chain opportunities to local businesses is an absolute priority to the Council. Your latest report had numerous good examples of social value, but I just wanted to pick out a few examples including the development of the Construction GCSE



with St Cuthbert's High School, the ongoing collaboration between Bradley and our Ways to Work team and the proposal to work with the Growth Company to support our local supply chain, will all have meaningful impact. We look forward to the development and increase in this with the main works phase and would be grateful if you could share this appreciation with VINCI Building colleagues, Bradley, A&B, HA Civils and others who have already put so much work into supporting our Borough.

Robert Gatensbury, Programme Lead, St. Helens Borough Council





ST HELENS
BOROUGH COUNCIL



CONTACT

For construction enquiries please contact:

Martin Horton

Delivery Lead

m: 07778 418875 e: martin.horton@vinci-building.co.uk

www.vinci-building.co.uk

If you would like to share this content externally or use it for communications outside the business, please contact the Social Value Team, who will gain approval and provide support.